

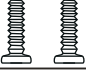



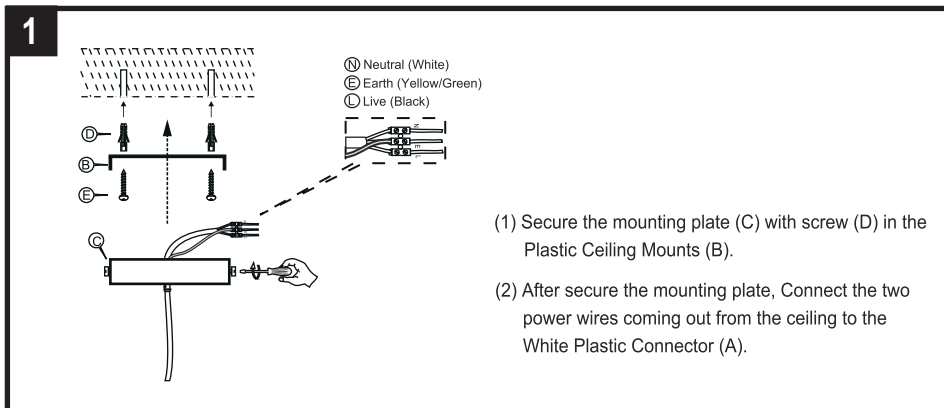


Part List and Hardware List

PART	DESCRIPTION	PICTURE	QUANTITY
A	CANOPY		1X
B	MOUNTING PLATE		1X
C	SIDE SCREW		2X
D	PLASTIC CEILING MOUNTS		2X
E	SCREW		2X
H	SHADE		1X

PREPARATION

Before beginning assembly of product, make sure all parts are present. Compare parts with package contents list and hardware contents list. If any part is missing or damaged, do not attempt to assemble the product. Estimated Assembly Time: 10 minutes.



Step 1



Step 2

CARE AND MAINTENANCE

1. Do not use acids or alkaline cleaning agents.
2. Sharp objects will damage and scratch the surface.
3. Wipe the surface with a soft, damp cloth.
4. Please make sure that you have all parts indicated before you begin assembly of this item
5. This item should be assembled on a soft surface to prevent scratching the finish during assembly
6. This item may require periodic tightening

Luxor Large Pendant TOV-G18304

TOV

LUXOR LARGE PENDANT ASSEMBLY INSTRUCTIONS

